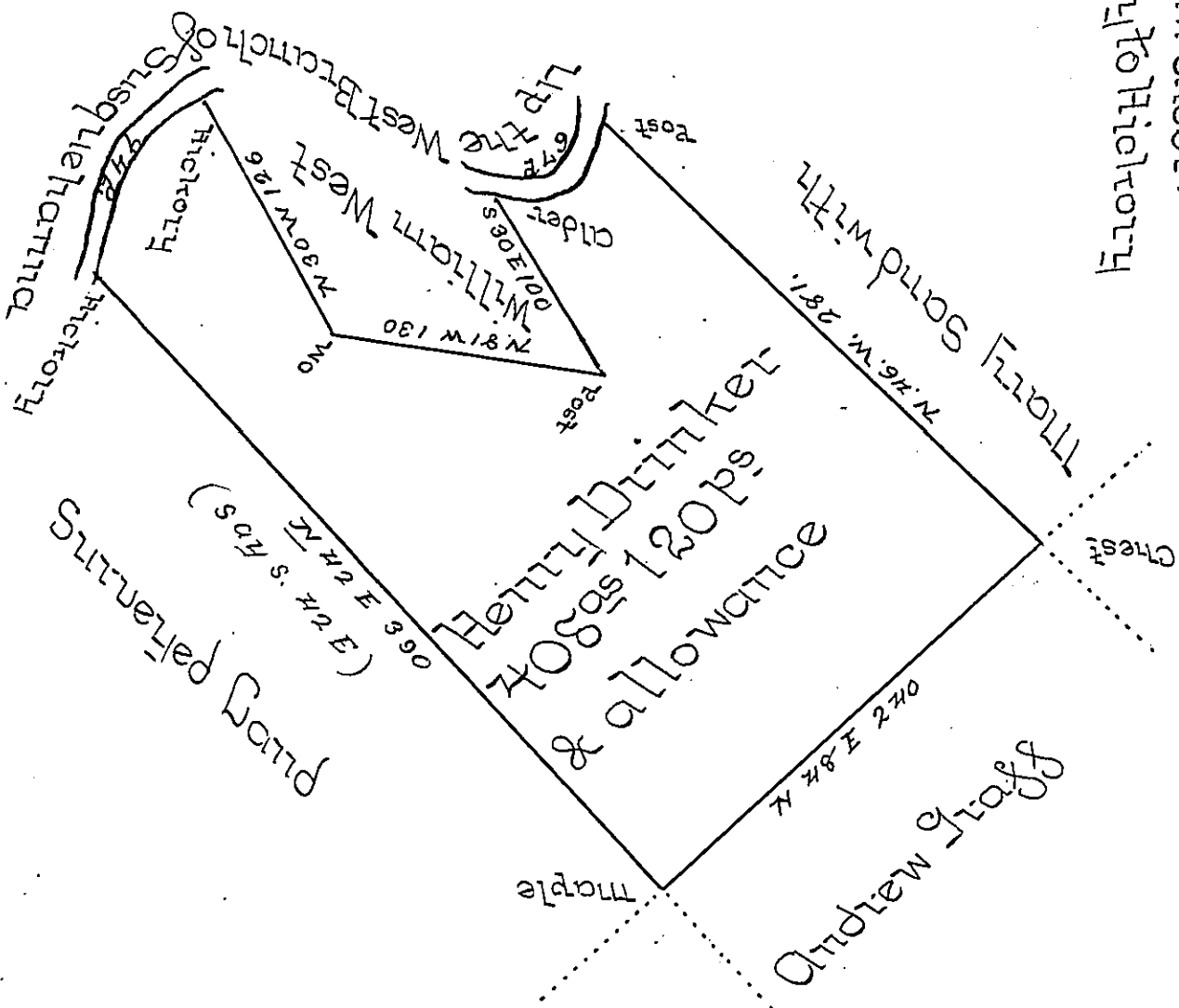


The following are the Courses and Distances up the River:

S 22 W 25	
S 63 W 22	
N 77 W 17	To an Alder.
From Hickory to Hickory	
S 63 W 7	
S 60 W 11	
S 74 W 13	
S 25 W 34	
S 15 W 13	
S 15 W 16	
	94



Situate on the South side of the West Branch of Susquehanna River about one Mile and a half below Chest Creek in Allegheny Township Huntingdon County containing four hundred and eight Acres, one hundred and twenty perches and the usual Allowance for Roads Surveyed the 4th day of September 1500. in pursuance of a Warrant granted to Henry Drinker dated the 10th day of January 1500.

John Carran JS

To Saml. Cochran Esq }
 Survey General of Penna. }

IN TESTIMONY that the above is a copy of the original remaining on file in the Department of Internal Affairs of Pennsylvania, made conformably to an Act of Assembly approved the 16th day of February, 1833, I have hereunto set my Hand and caused the Seal of said Department to be affixed at Harrisburg, this Five day of November 1898.

James W. Fatta
 Secretary of Internal Affairs.